



InfoScript

Modbus Ready Industrial Display.

With a mine hardened display and Modbus ready capabilities,
InfoScript is built strong to keep everyone informed.

EVERYTHING YOU NEED IN ONE DISPLAY

The Accutron InfoScript display comes in two IP66 rated enclosure sizes, to survive harsh environmental conditions. The large InfoScript is NEMA 4X, made of stainless steel and features full colour text visible up to 30 meters. InfoScript Mini is a compact IP66 rated ABS display featuring up to 4-lines of full colour text. Install multiple InfoScripts to show unique messages, or send out information to display on all InfoScripts simultaneously. Keep your workers informed, and keep them safe.



CONFIGURABLE RELAYS

The large InfoScript comes with 3 configurable dry-contact relays that allow for multi-conditional activation. Relays are available as an option for InfoScript Mini.



Airflow



Temperature



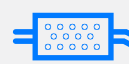
Pressure



Humidity



Toxic Gas



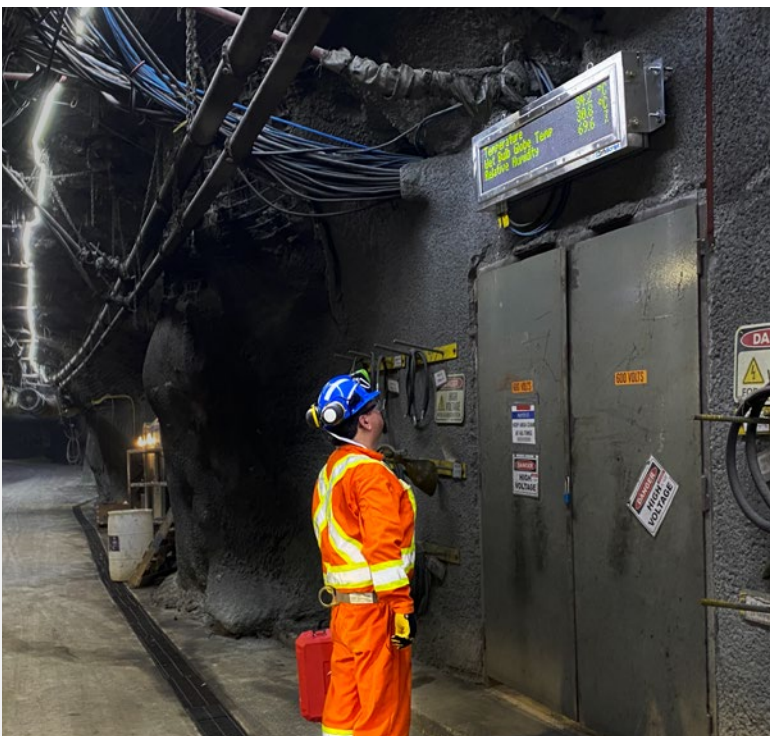
DPM



Dust



Messages



CUSTOMIZATION

InfoScript gives users the customization options they need to display exactly what they want.

Each InfoScript comes with full colour customization. Line colour options are unlimited and can display data in independent colours on the same screen. Data colour options are unlimited and are easily defined by the user. There is also no limit to the number of screens InfoScript can display, so you can get all your information out to those that need it.



LIVE DATA FROM ANYWHERE

The InfoScript connects as both a client and a server simultaneously. As a client the InfoScript can request information from any device on the network, giving you displayed information in real time. The InfoScript can also act as a server, displaying information given to it from surface.



As a client, InfoScript retrieves information from network devices

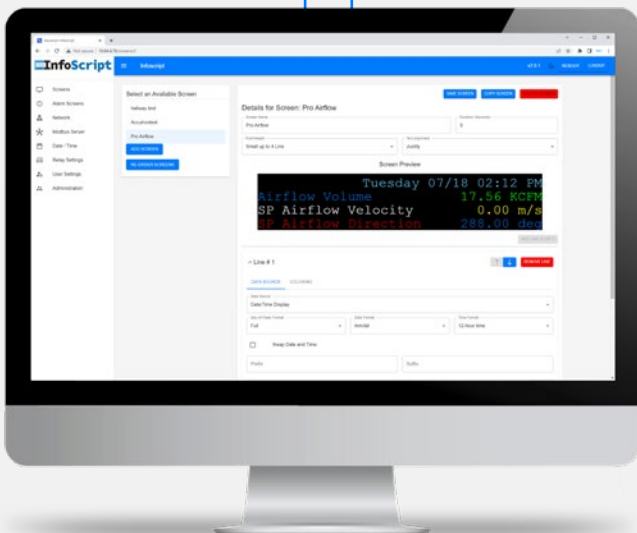


As a server, InfoScript retrieves requested information

FROM THE SURFACE

The InfoScript web interface allows users to setup and manage their displays from anywhere on the network.

- Configure your dashboard to display the information you need and send custom live messages from surface to inform workers underground.
- Display readings from various devices to inform workers of temperature, airflow, gas concentrations and other conditions.
- Remotely run system diagnostics and check for errors.
- Works with any mobile, laptop or desktop to effortlessly access the InfoScript's webpages locally or from any network access point.



INFOSCRIPT SPECIFICATIONS

	InfoScript Mini	InfoScript Large
Part Number	ACC-INFOSCRIPT-SM-ABS-01	ACC-INFOSCRIPT-LG-SS-R3
Communications	Modbus TCP (Client & Server) Web interface (configurations and alarms) PoE Optional EtherNet/IP TCP- Allen Bradley	Modbus TCP (Client & Server) Web interface (configurations and alarms) PoE Optional EtherNet/IP TCP- Allen Bradley
Enclosure	ABS, IP66 Dimensions: L 676mm x W 72mm x H 164mm	316 Stainless Steel, NEMA 4X, IP66, cULus, cCSAus Dimensions: L 1380mm x W 125mm x H 410mm
Display	Full Colour, 4 line, 33 character Scalable line/font sizes: 10-13 characters at 1 line, to 30-33 characters at 4 lines (character dependent)	Full Colour, 4 line, 33 character Scalable line/font sizes: 10-13 characters at 1 line, to 30-33 characters at 4 lines (character dependent)
Relays	Optional 3 relays with ACC-INFOSCRIPT-R3-JB-01	3 configurable dry-contact relays (multi-conditional activation) Contact Form: SPDT (1 Form C) Rated load (resistive load): 12 A at 250 VAC / 12 A at 24 VDC
Power In	Power over Ethernet - 30W IEEE802.3at, mode A&B compatible Optional 110-240 VAC or 24 VDC cRUus (CSA Equivalent) NEMA 4X JB ACC-INFOSCRIPT-SM-JB-01	110-240 VAC cRUus (CSA Equivalent) Rated Power Supply
Power Draw	Less than 1A @120V	Less than 1A @120V
Temperature	-40°C to +60°C	-40°C to +60°C
Mounts	Adjustable wall mount	Hanging eyelets Optional 2 standard L-Brackets ACC-INFOSCRIPT-LG-SS-ASY-01 Optional 2 adjustable Angle Brackets ACC-INFOSCRIPT-LG-SS-ASY-02



+1.705.682.0814

info@accutroninstruments.com

www.accutroninstruments.com



Rev 2022.12